

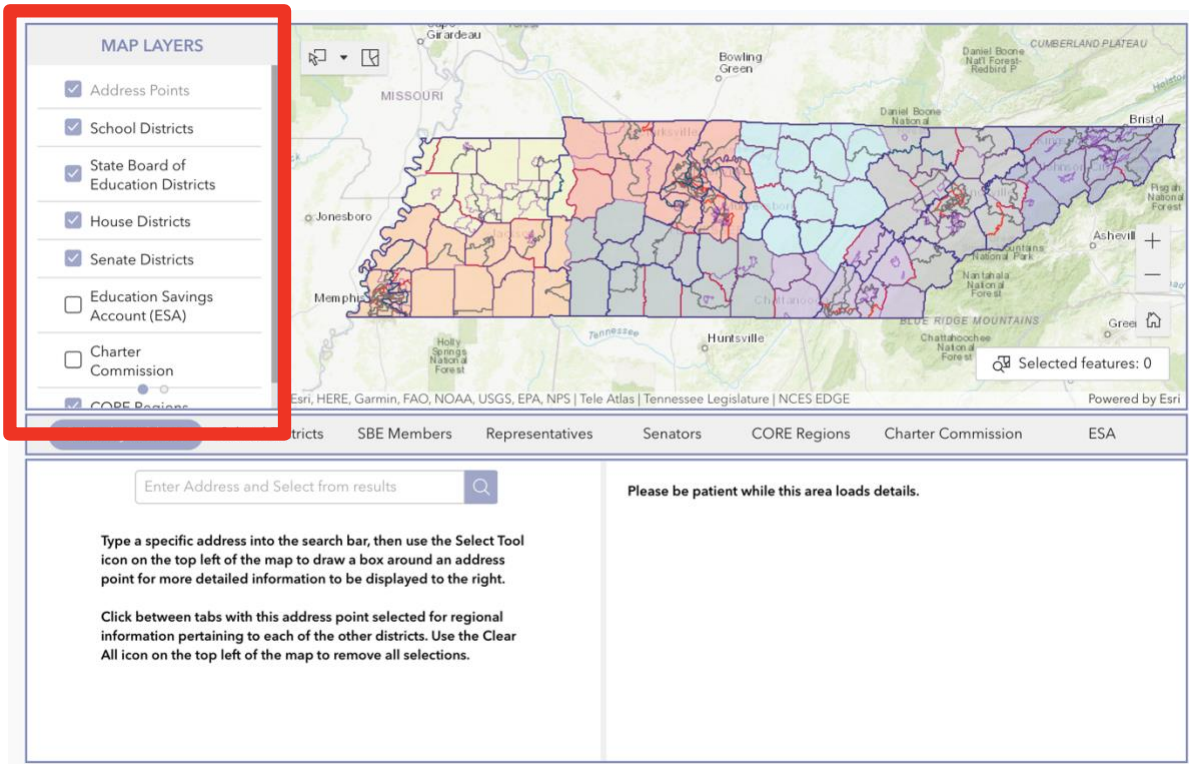
Tennessee Education Interactive Map

Please reference the guidelines below when using the Interactive Tennessee Department of Education Tennessee School District Map Tool found here: <https://tn.gov/education/about-the-tdoe/tennessee-education-interactive-map.html>

General Guidelines

This interactive map tool can be used to find key information for specific addresses, school districts, State Board of Education members, state representatives, state senators, and CORE regions throughout Tennessee. Here's what you need to know to get the most out of using this tool and a few tips for troubleshooting!

MAP LAYERS PANEL:



The screenshot displays the 'MAP LAYERS' panel on the left side of the map interface. The panel includes the following layers:

- Address Points
- School Districts
- State Board of Education Districts
- House Districts
- Senate Districts
- Education Savings Account (ESA)
- Charter Commission
- CORE Regions

Below the map layers panel, there is a search bar with the placeholder text 'Enter Address and Select from results'. Below the search bar, there are instructions:

Type a specific address into the search bar, then use the Select Tool icon on the top left of the map to draw a box around an address point for more detailed information to be displayed to the right.

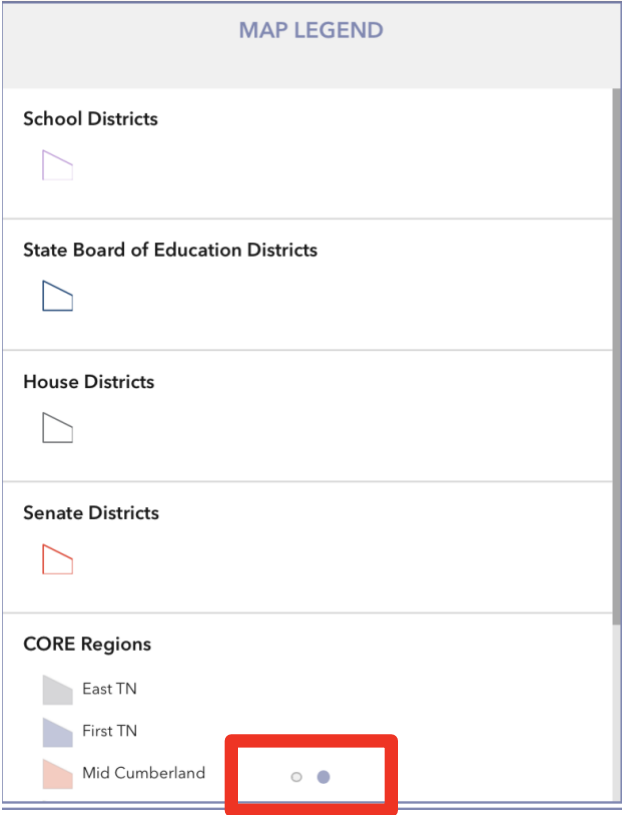
Click between tabs with this address point selected for regional information pertaining to each of the other districts. Use the Clear All icon on the top left of the map to remove all selections.

At the bottom of the map interface, there are tabs for: School Districts, SBE Members, Representatives, Senators, CORE Regions, Charter Commission, and ESA. A message on the right side of the interface reads: 'Please be patient while this area loads details.'

Here you can use the check boxes to turn on or off any of the MAP LAYERS. Turning layers on or off can be useful to see how school districts and regions overlap. To ensure the interactive map displays what you are looking for, be sure to have that specific layer or layers turned on by clicking the check mark in the box by the layer you're interested in.

MAP LEGEND PANEL:

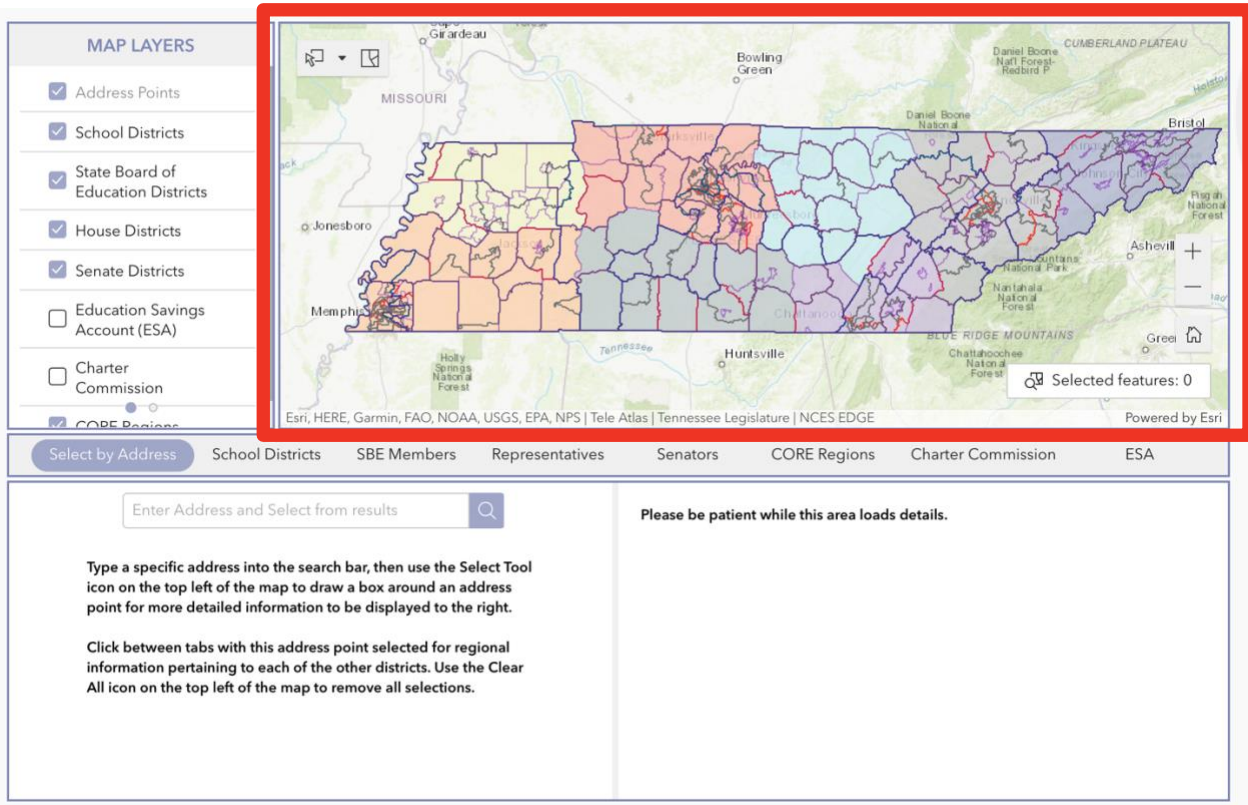
You'll notice at the bottom of this box, two small dots. If you click the second dot, this panel will now display the MAP LEGEND.



Note: The map Legend will only display the layers you have turned on at any given time.

INTERACTIVE MAP & ICONS:

To the right of the MAP LAYERS and LEGEND panels, we have the interactive map and icon menu.



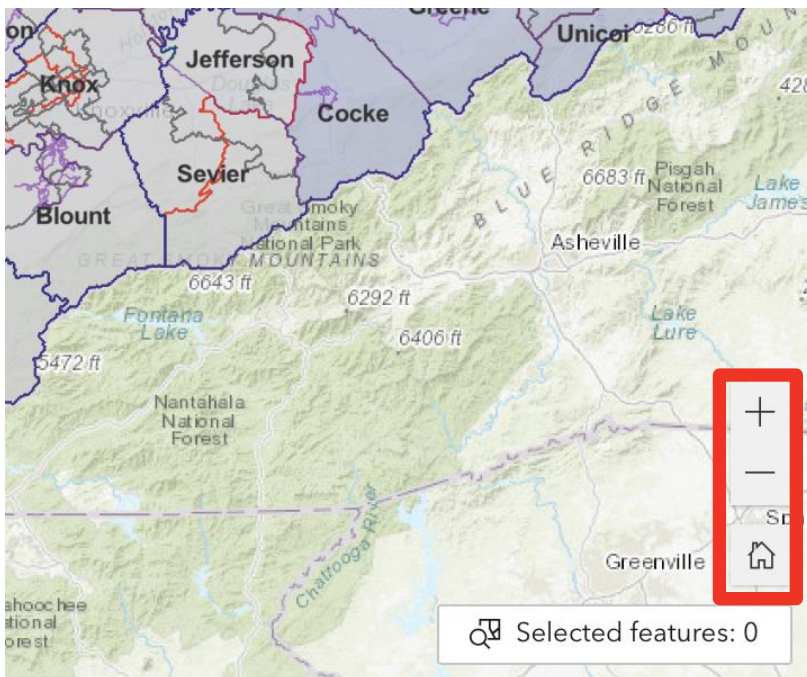
In the top left of this panel is the **SELECT icon** with a dropdown box that gives you the ability to change the selection tool shape and options. This icon is primarily used for searching a specific address, but this will be covered in more detail later.



The next icon over is the **CLEAR SELECTION icon**, which is the quickest way to reset your search options at any given time.

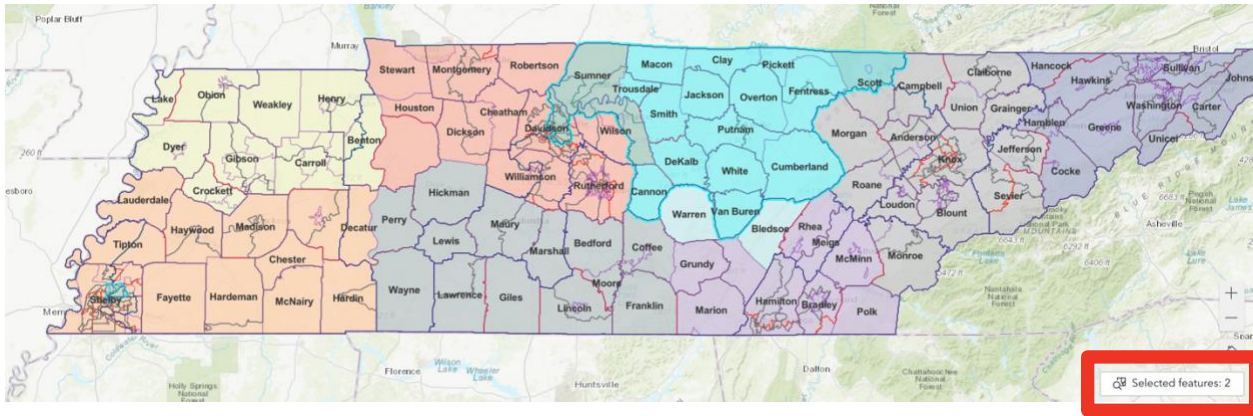


The + and - icons enable you to zoom in or out of the map, respectively. The **HOME icon** centers and scales the map accordingly back to the default view.



PRO TIP: Be sure your browser is as expanded as possible to get the best results for the map display.

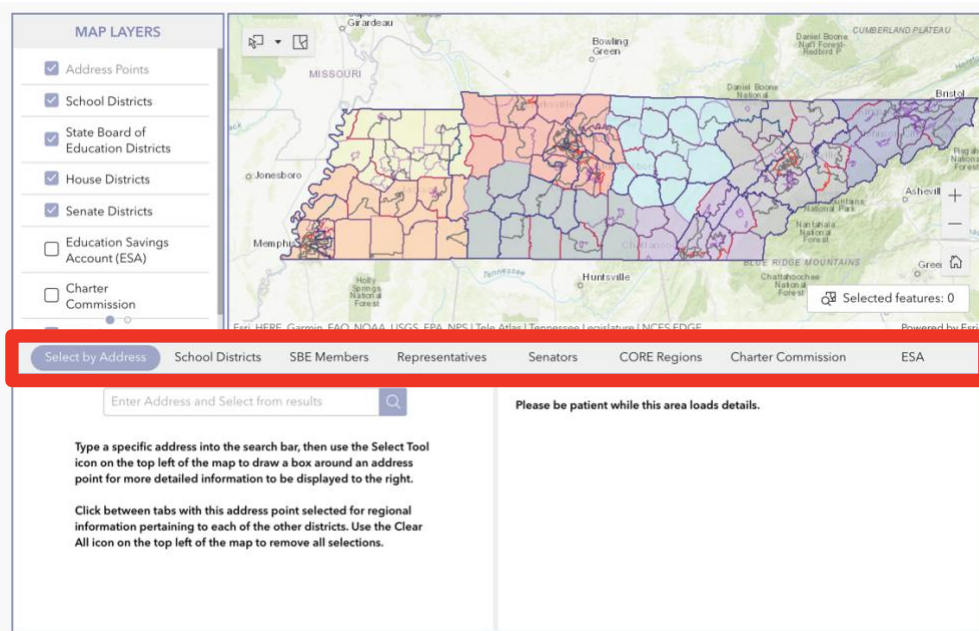
Below the **HOME icon** is the **SELECTED FEATURES counter**. This lets you know how many data points, or layers, are being shown on the map and what information is displayed at any given time.



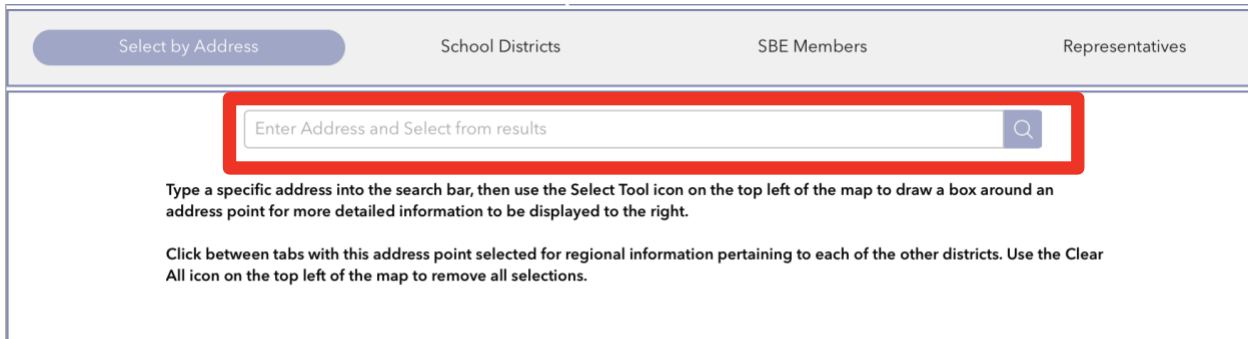
PRO TIPS: If you click the **SELECTED FEATURES** button, it will zoom to those elements you have selected to appear on the map. This can help illustrate the extent of a district/region. You can also use this area for troubleshooting if you may have accidentally selected features to appear that you are not interested in. If so, be sure to hit the **CLEAR SELECTION icon** and adjust your settings.

TABS PANEL:

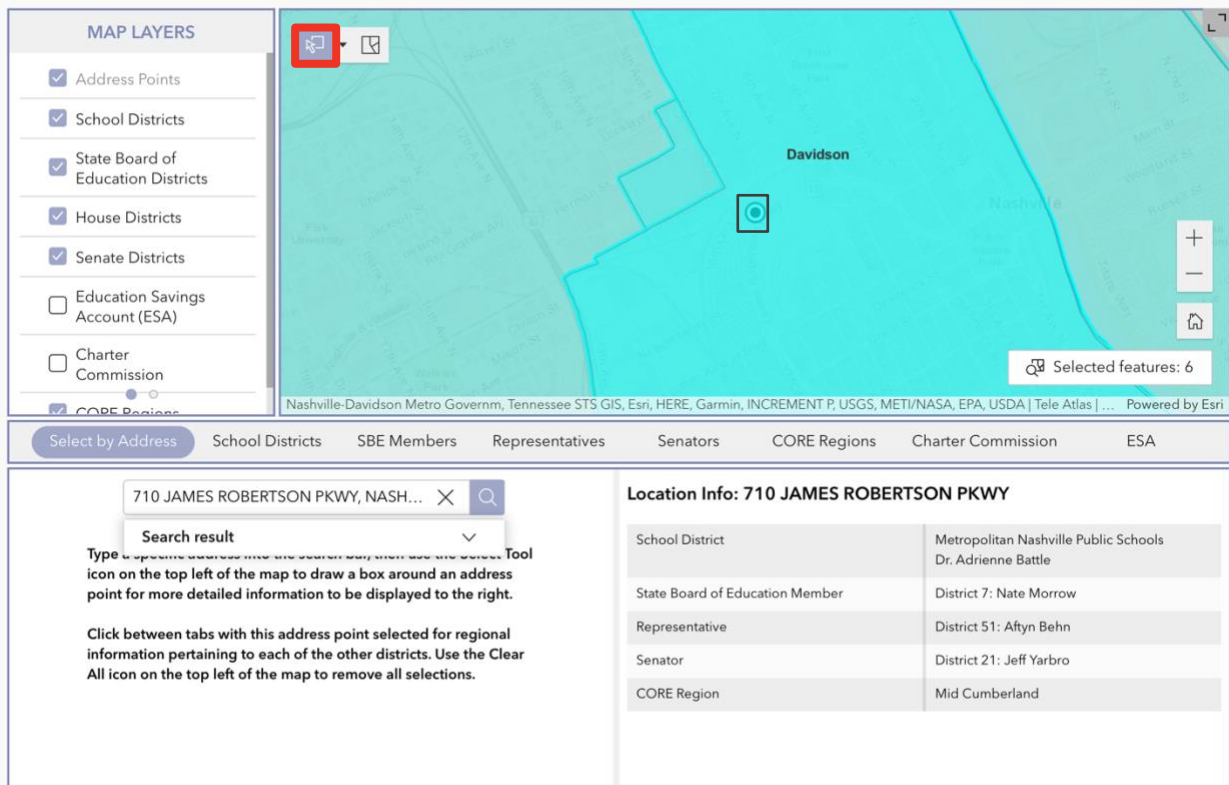
The TABS below the MAP LAYERS & MAP panels enable you to choose what data and information you are pulling into the very bottom panel.



If you have a specific address you want to search, click on the **SELECT BY ADDRESS** option and type it into the search bar. Select it from the drop-down list if needed to have the circle marker show up on the map.

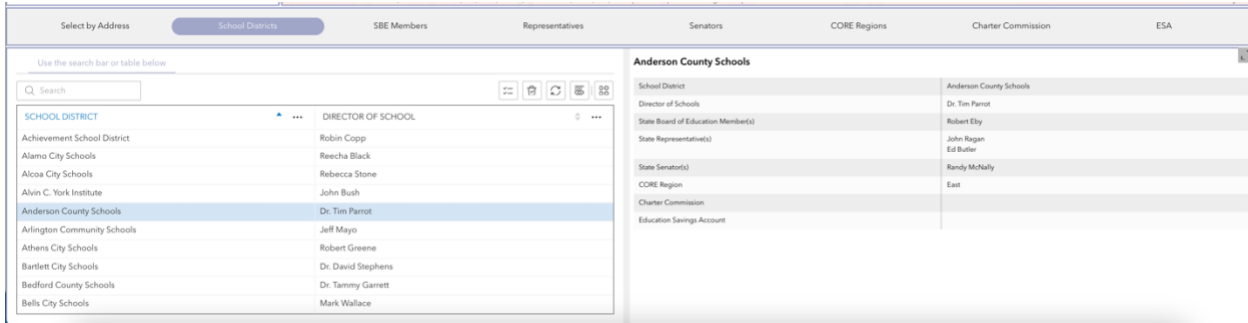


Then use the **SELECT icon** in the top left of the MAP PANEL and draw a box around the map marker for more detailed information to be displayed to the right.



Click between the various tabs with this address point selected for regional information pertaining to each of the other districts. Use the **CLEAR ALL icon** on the top left of the map to remove all selections.

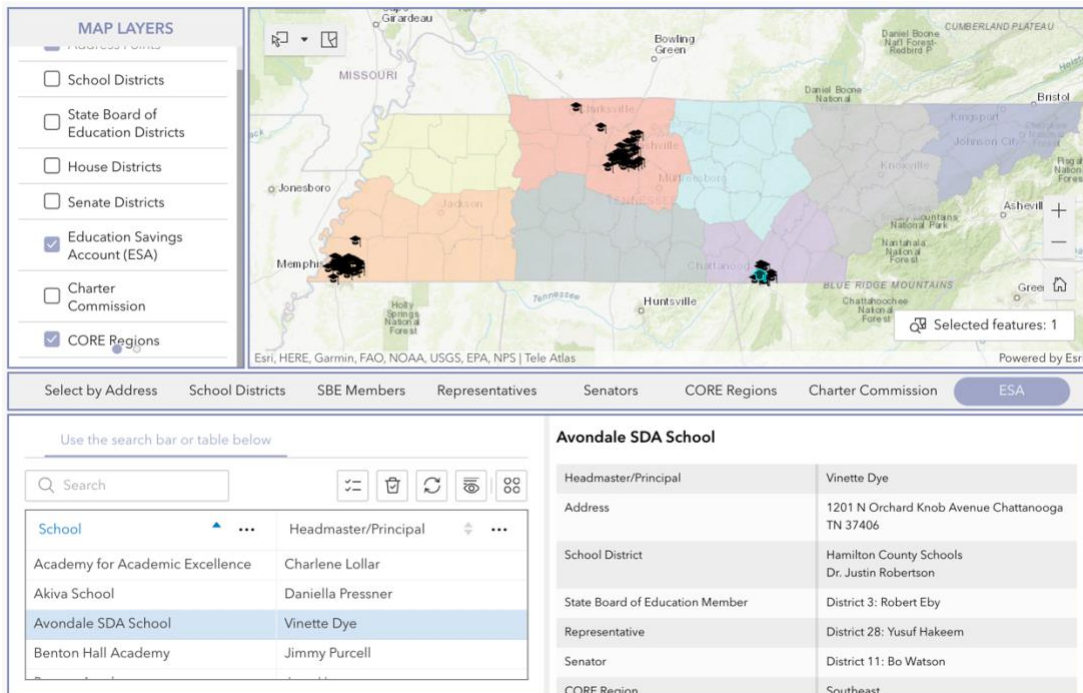
To see information for each respective district, select from the tabs above, then use the search bar or select from the table. You can also turn all other layers off in the MAP LAYER panel and click on the specific district on the interactive map. Use the **CLEAR ALL icon** on the top left of the map to remove all selections. NOTE: Please be patient while information in the right panel loads.



PRO TIP: If you made a selection and you do not see anything happening on the interactive map, first be sure that the layer you selected is turned on. Next, zoom out from the map to see the whole state.

ADDITIONAL FEATURES:

You can also search for information related to participating Education Savings Account (ESA) schools and Charter Commission schools. Be sure those layers are turned on and use those corresponding tabs to refine your search.



This map is fully interactive, so if you click directly on a district or region, the information will also populate in the panel on the right below. **NOTE:** Before clicking on the map, make sure the SELECTION button is turned off.

MAP LAYERS

- School Districts
- State Board of Education Districts
- House Districts
- Senate Districts
- Education Savings Account (ESA)
- Charter Commission
- CORE Regions

Selected features: 1

Select by Address **School Districts** SBE Members Representatives Senators CORE Regions Charter Commission ESA

Use the search bar or table below

Search

SCHOOL DISTRICT	DIRECTOR OF SCHOOL
Achievement School District	Robin Copp
Alamo City Schools	Reecha Black
Alcoa City Schools	Rebecca Stone
Alvin C. York Institute	John Bush

Coffee County Schools

School District	Coffee County Schools
Director of Schools	Dr. Charles Lawson
State Board of Education Member(s)	Warren Wells
State Representative(s)	Rush Bricken
State Senator(s)	Janice Bowling
CORE Region	South Central
Charter Commission	
Education Savings Account	

We hope you find this interactive map tool useful. If you have any feedback or notice any information is incorrect, please use Feedback/Correction form below the map.