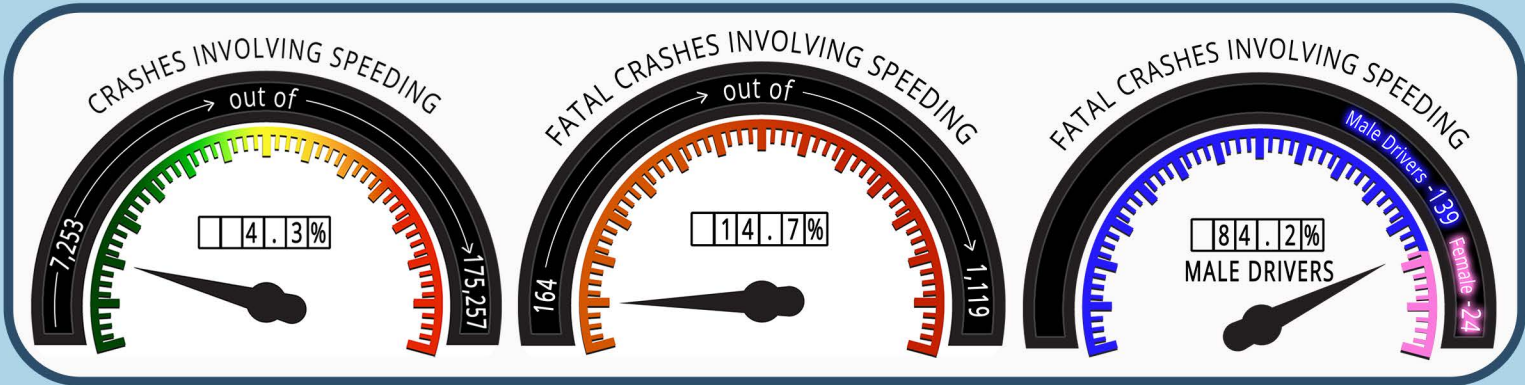


SPEEDING



- Speeding crashes are 4x more likely to cause a fatality than non-speeding crashes
- Drunk drivers are almost 4x more likely to speed than sober drivers
- 64% of speeding crashes are NOT on an interstate

Crashes at night are 1.2x more likely than daytime crashes to involve a speeding driver



1 in 4 speeding-related crashes occurred during daylight in the rain

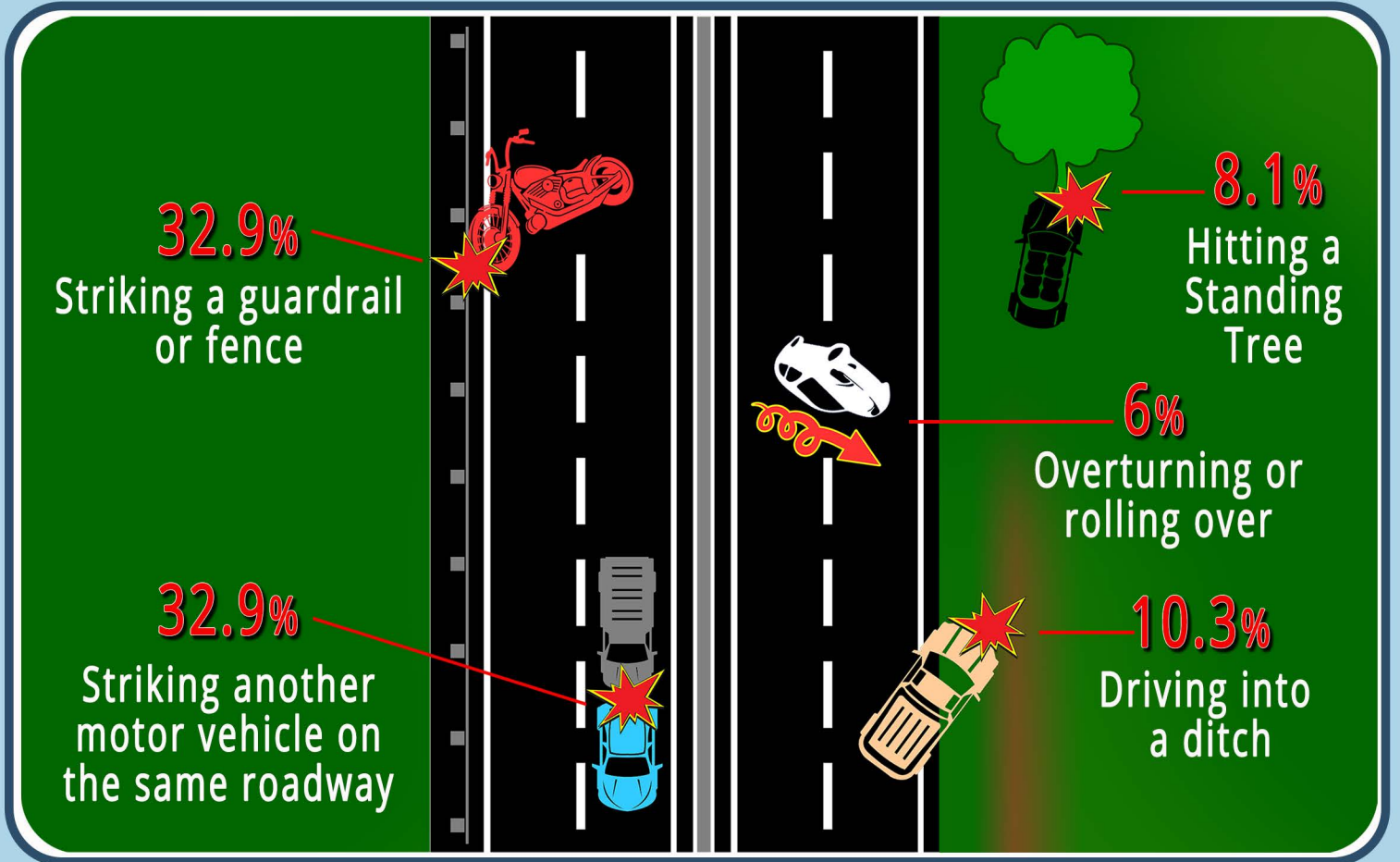
25

Speeding drivers are twice as likely to be under the age of 25 than drivers who are not speeding




SPEEDING

TOP 5 FIRST HARMFUL EVENTS WHERE SPEED WAS A FACTOR




SPEEDING IN URBAN AREAS



2.6x more likely to involve a motorcycle

SPEEDING IN RURAL AREAS



25% more likely to involve a teen driver

