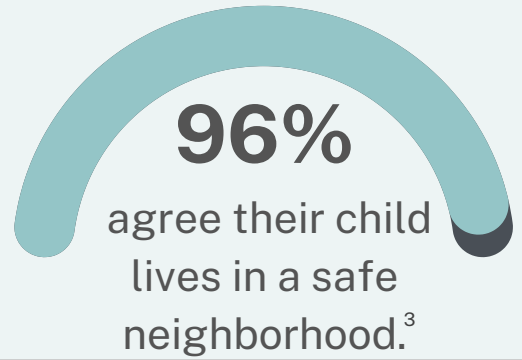


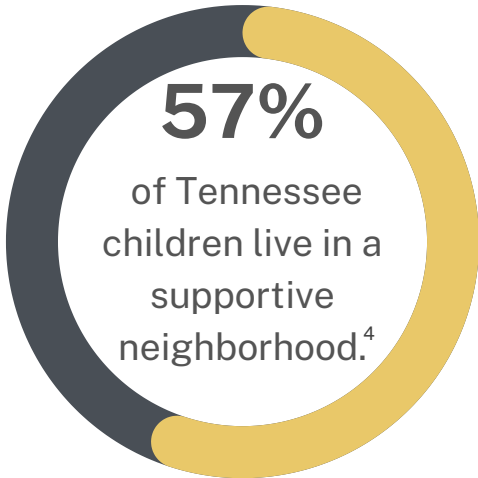
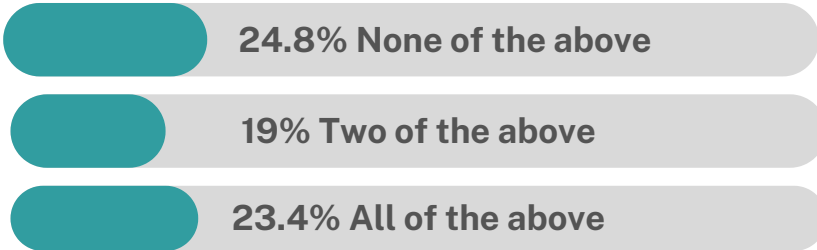
Continue to create, support and sustain resilient children, youth, families and communities.

Recommendations

- Modeling the Governor's success with identifying and investing in distressed communities, identify and invest in communities lacking resilience infrastructure (parks, recreational centers, sidewalks, libraries).
- Expand on existing investments in community infrastructure and the next generation by ensuring every Tennessee child has a safe and accessible place to play, learn and engage in constructive activities.



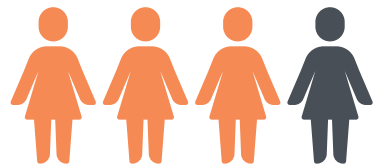
Percent of Tennessee children living in a neighborhood that contains parks, recreation centers, sidewalks or libraries?¹



Supportive neighborhoods contained the following characteristics:

- People in this neighborhood **help each other out**;
- **We watch out for each other's children** in this neighborhood; and
- When we encounter difficulties, **we know where to go for help** in our community

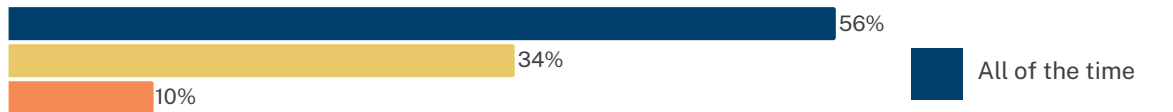
Three out of four Tennessee children participated in organized afterschool or weekend activities/lessons.⁵



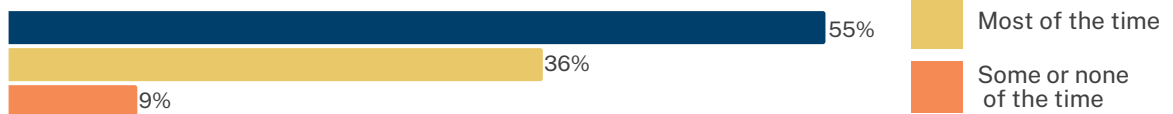
When your family faces problems,

Indicators of Resilience Among Tennessee Families

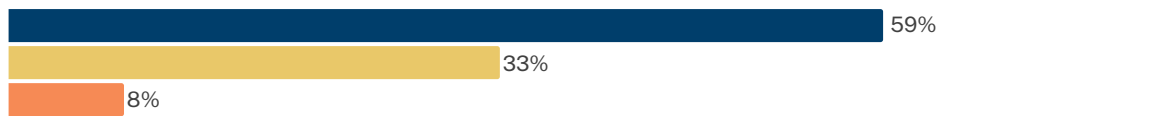
How often are you likely to talk together about what to do?⁶



How often are you likely to work together to solve the problems?⁷



How often are you likely to know we have strengths to draw on?⁸



How often are you likely to stay hopeful even in difficult times?⁹

