



Bright Start TN
Powered by **TQEE**



Bee the Change: A Systems Approach to Early Care & Education

March 5, 2024

TQEE Tennesseans
for Quality
Early Education



TQEE

Nonpartisan coalition of advocates for Tennessee's youngest learners



Effective Policy
& Practice



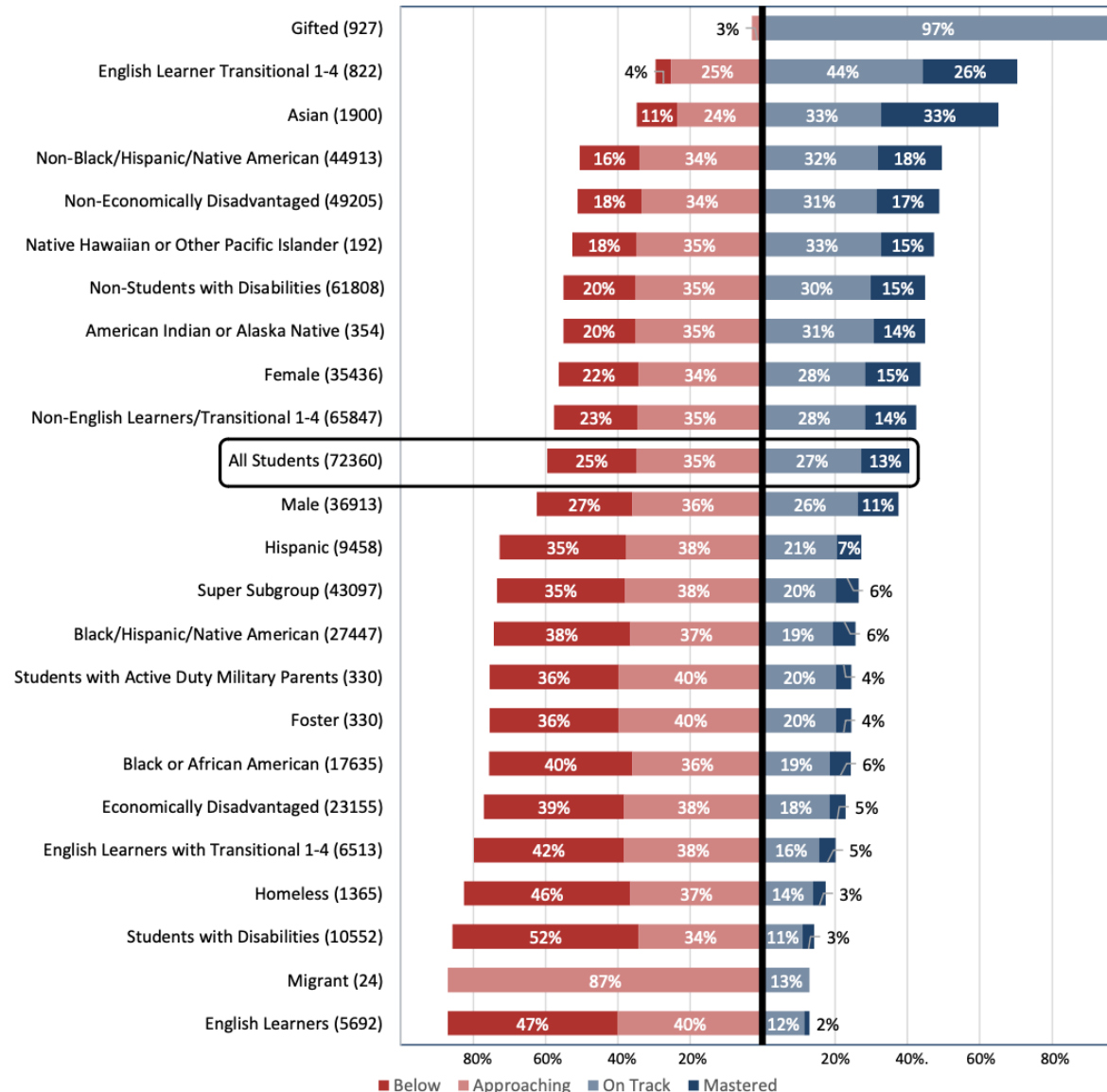
A Strong Voice



Legislative Action

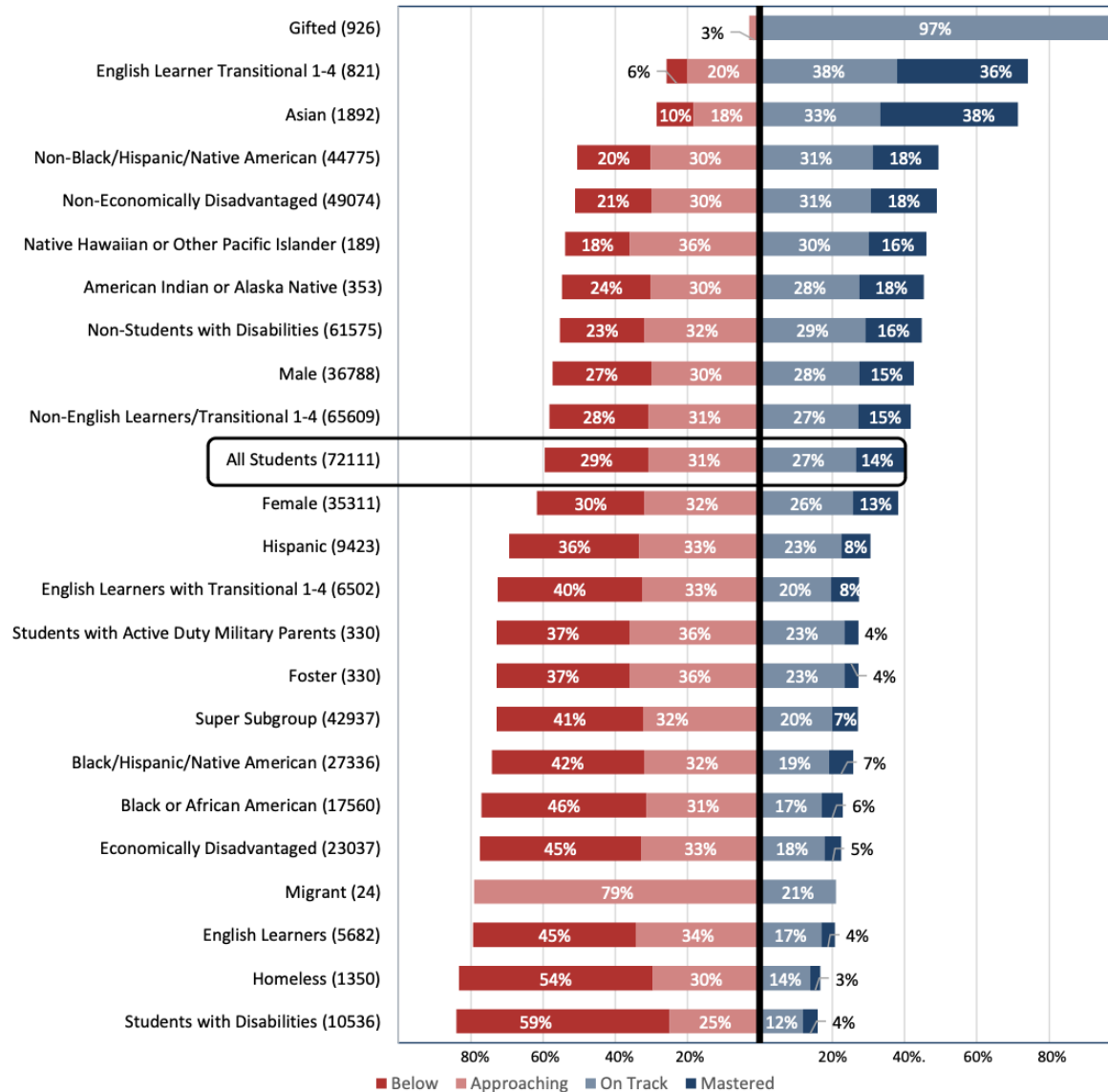
Mission: To advance state policies and practices that ensure all Tennessee children **birth through 3rd grade** get the high-quality early education they need to power our state's future.

Tennessee 3rd Grade ELA Proficiency
SY22-23

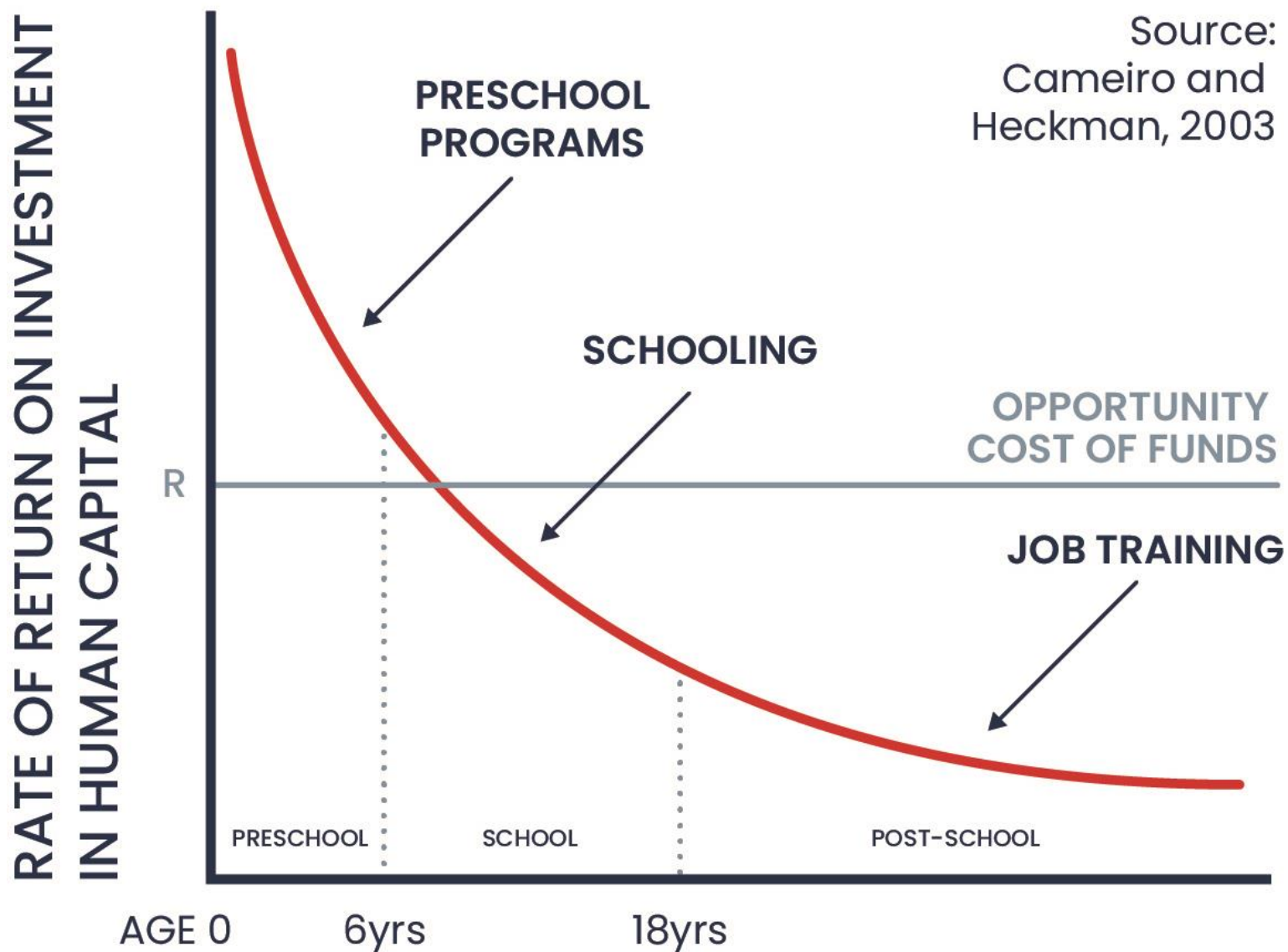


- Only 40% of TN third graders are proficient in reading and in math
- Concerns across the board but some subgroups are more in crisis than others due to opportunity gaps

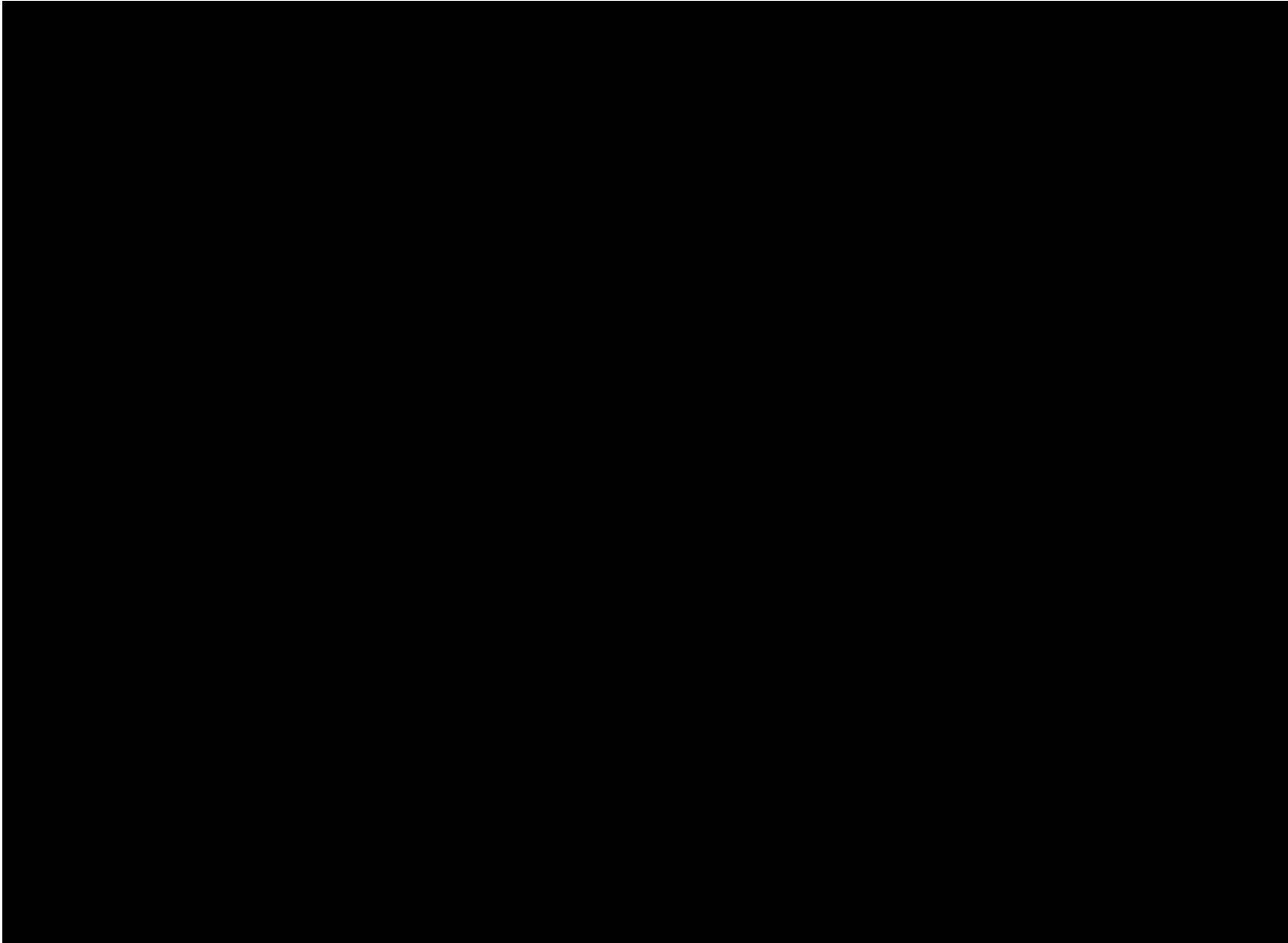
Tennessee 3rd Grade Math Proficiency
SY22-23



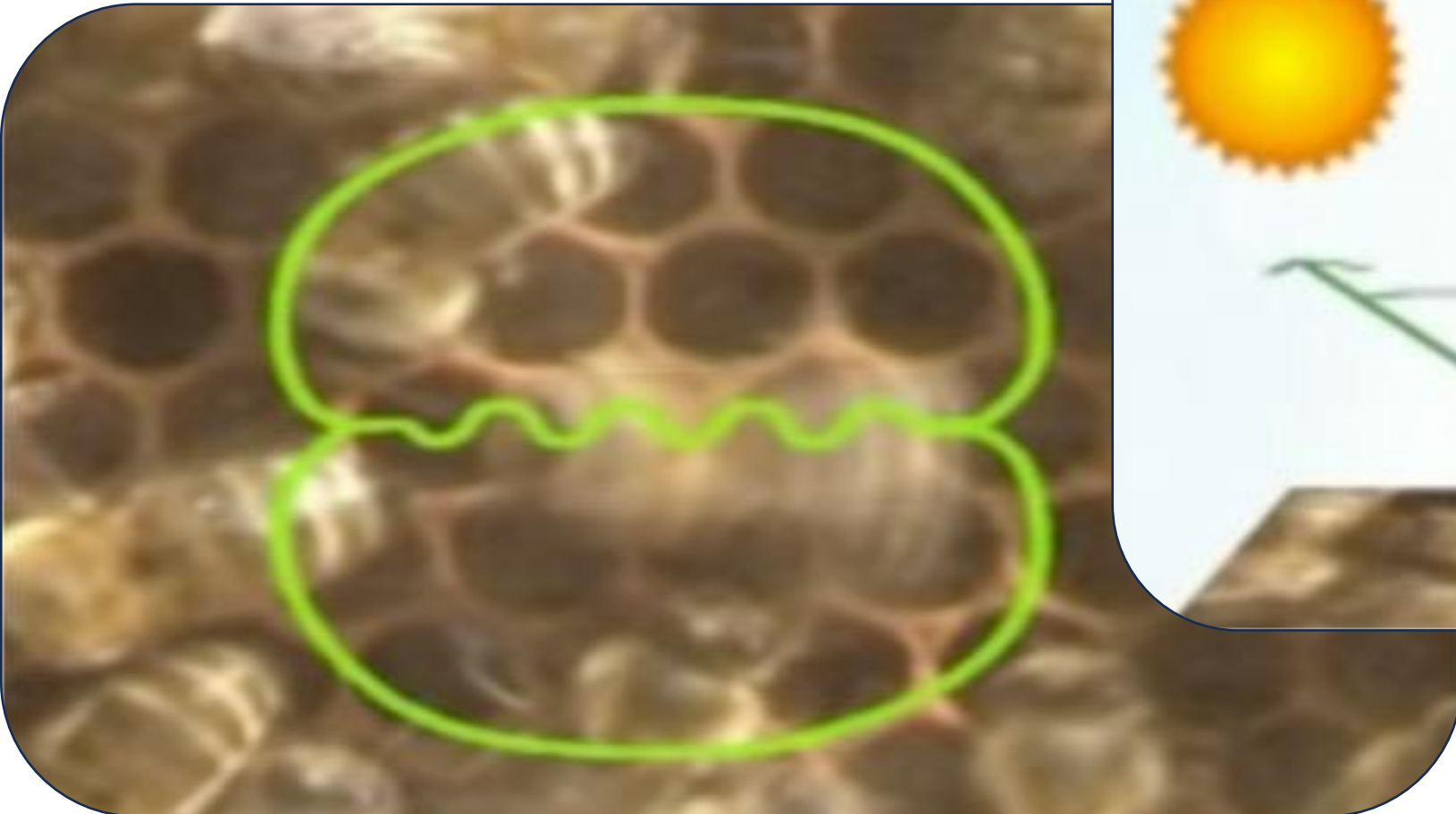
- Research shows that children not proficient by third grade are four times more likely to drop out of high school and 60% less likely to pursue post-secondary degree



What can we learn from the world of bees?



The 'waggle dance'...





Bright starts finish strong.

- ★ Statewide network
- ★ Community partnerships
- ★ Closing achievement and opportunity gaps
- ★ Children birth through 3rd grade

- ★ **Mission:** Tap the power of communities across the state to collaboratively design, implement and scale high-quality early care and education (ECE) systems locally, while informing and advocating supportive state policies.
- ★ **Vision:** A continuum of high-quality early care and education from birth through third grade is the norm for all Tennessee children.
- ★ **Goal:** Communities/their school districts will increase reading and math proficiency ("on track" or "mastered" on TCAP) rates by 5 percentage points each year year



Creating a Cycle of Success

What children need to achieve 3rd grade level reading and math proficiency



- High-quality birth-through-age-eight learning environments
- Physical health, mental health, and development on track from birth
- Supported, and supportive, families and communities

High-Quality Learning Environments



High Quality
Child Care and
Education



Positive Early Care
and Education



Regular School
Attendance



Grade-level
Proficiency
Pre-K-2nd Grade



Climate
Summer
Learning

Health & Development on Track from Birth



Healthy
Birthweight



Physical
Health



Social-
Emotional
Health



Oral
Health



Early
Intervention

Supported and Supportive, Families & Communities



Safe at Home



Positive
Parent/Child
Interaction



Reading with
Children



Supports for
Families



Skilled and
Knowledgeable
Parents

Bright Start TN community partnerships are:

- ★ Using data to better understand barriers to early learning
- ★ Identifying and leveraging existing local and state assets and resources
- ★ Establishing and scaling evidence-based and promising strategies
- ★ Tracking outcomes and use data for continuous improvement
- ★ Sharing learnings among peer communities and with local and state policymakers
- ★ Informing TQEE's state policy agenda and expanding our advocacy network



Bright Start TN now reaching 60% of TN's population



★ **Memphis / Shelby County**
First 8 Memphis

★ **West Tennessee**
United Way of West TN
(Decatur, Dyer, Hardeman, Haywood, Hardin, Lake, Madison, McNairy, and Weakley)

★ **Nashville / Davidson County**
Peabody Center at Vanderbilt

★ **South Central TN**
United Way of Rutherford and Cannon Counties
(Bedford, Cannon*, Coffee, Moore, Lincoln, Rutherford, and Warren*)

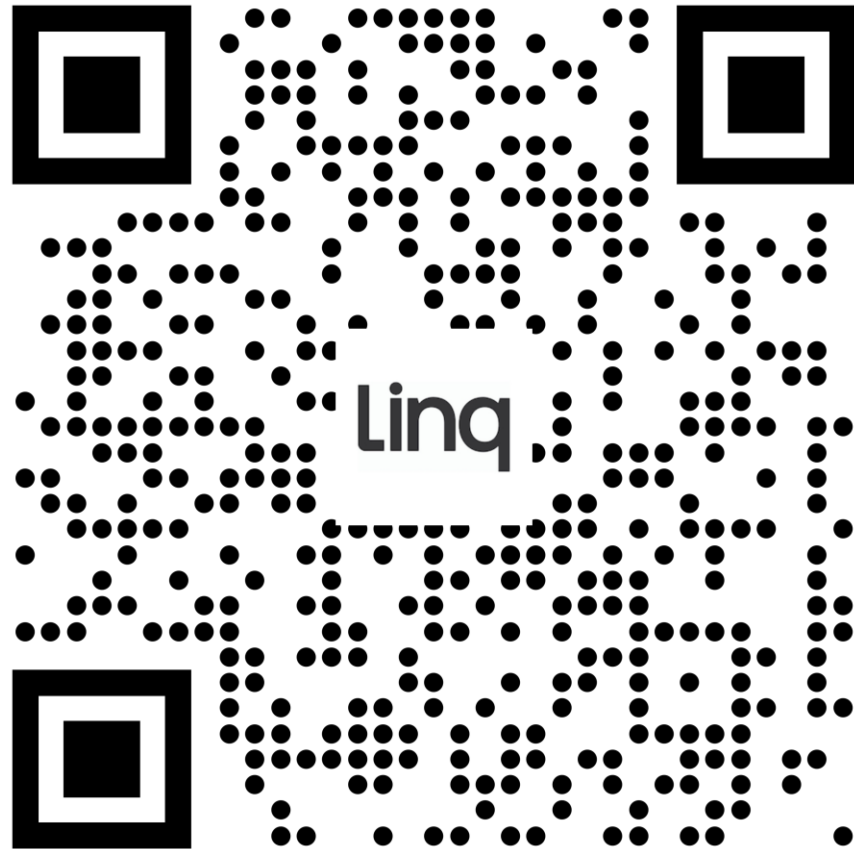
★ **Upper Cumberland**
Upper Cumberland Development District
(Cannon*, Clay, Cumberland, DeKalb, Fentress, Jackson, Macon, Overton, Pickett, Putnam, Smith, Van Buren, Warren*, and White)

★ **Chattanooga / Hamilton County**
Chattanooga 2.0

★ **Knoxville / Knox County**
United Way of Greater Knoxville

★ **Northeast Tennessee**
Ballad Health / STRONG ACC
(Carter, Cocke, Greene, Hamblen, Hancock, Hawkins, Johnson, Sullivan, Unicoi and Washington)

Don't "bee" a stranger...



Jonathan Scoonover

Senior Vice President of
Strategic Practice

**Tennesseans for Quality Early
Education**

jonathan@tqee.org

865.256.4333